



Power Utility

Case Study

## Bangladesh Sandwip Interconnector

### OVERVIEW

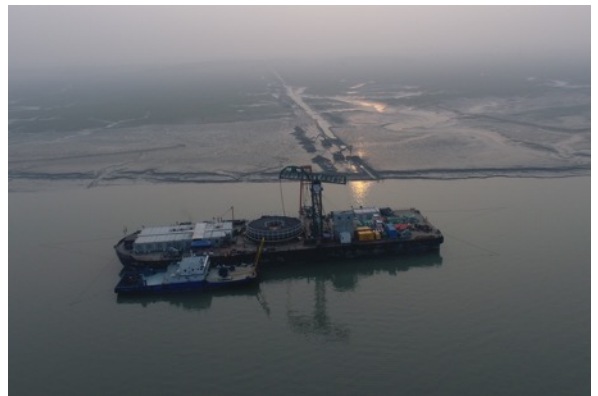
SBSS, in consortium with cable manufacturer ZTT, was awarded by Bangladesh Power Development Board in 2017 to install two 15km 33kV power cables between Barabkunda and Sandwip islands in Bangladesh. This project was the first long distance submarine composite power cable project in Bangladesh.

### KEY CHALLENGES

In partnership with ZTT, SBSS successfully delivered this turnkey project and overcame the operational difficulties of a lack of local resources, deep cable burial depth and a significantly long, 2.4km landing distance.

### SCOPE OF WORK

- Installation of 2 x 15km 33kV power cables
- Cable burial up to 6m water depth
- Cable landing



VESSEL: AI LAN 1  
LOCATION: BANGLADESH